

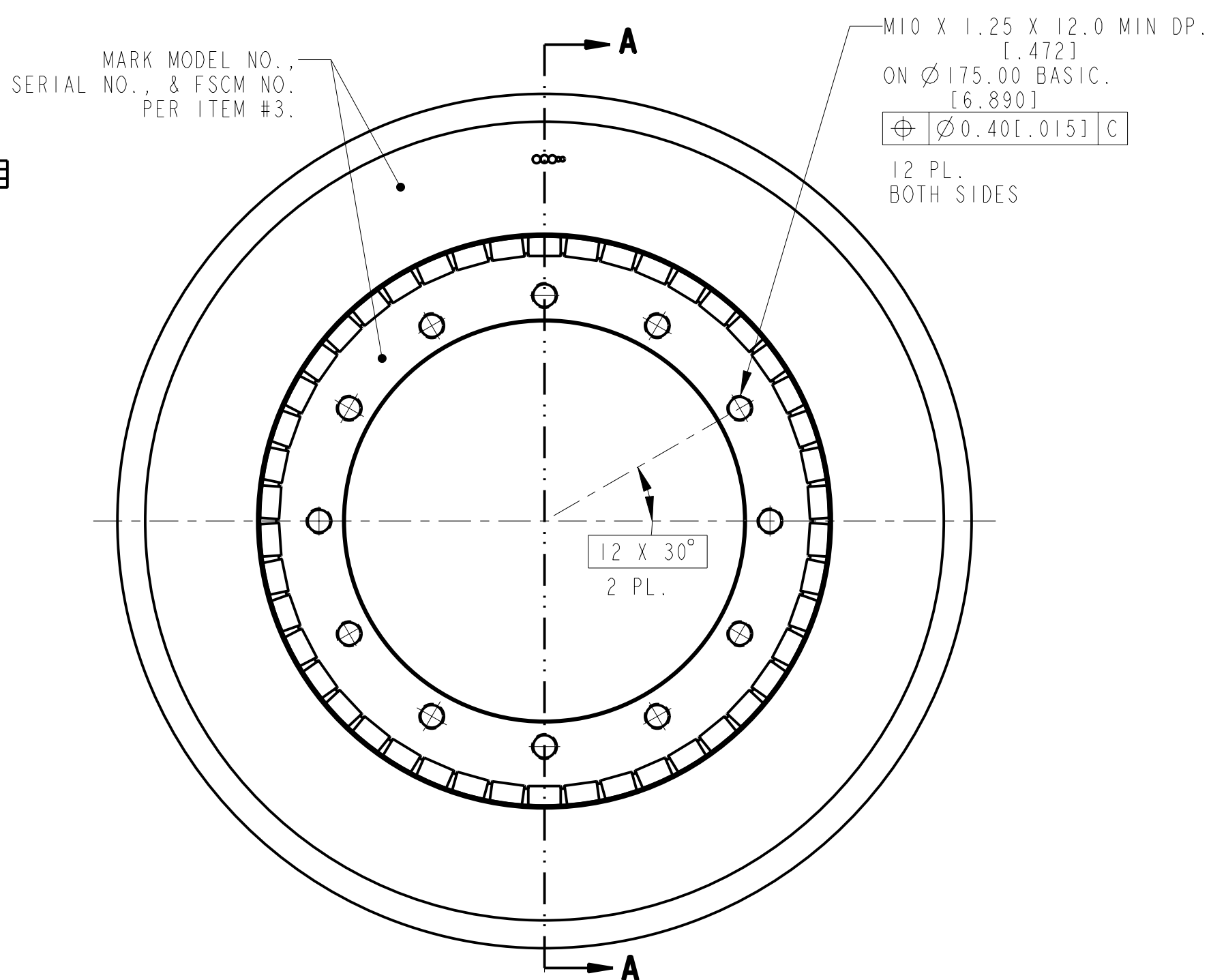
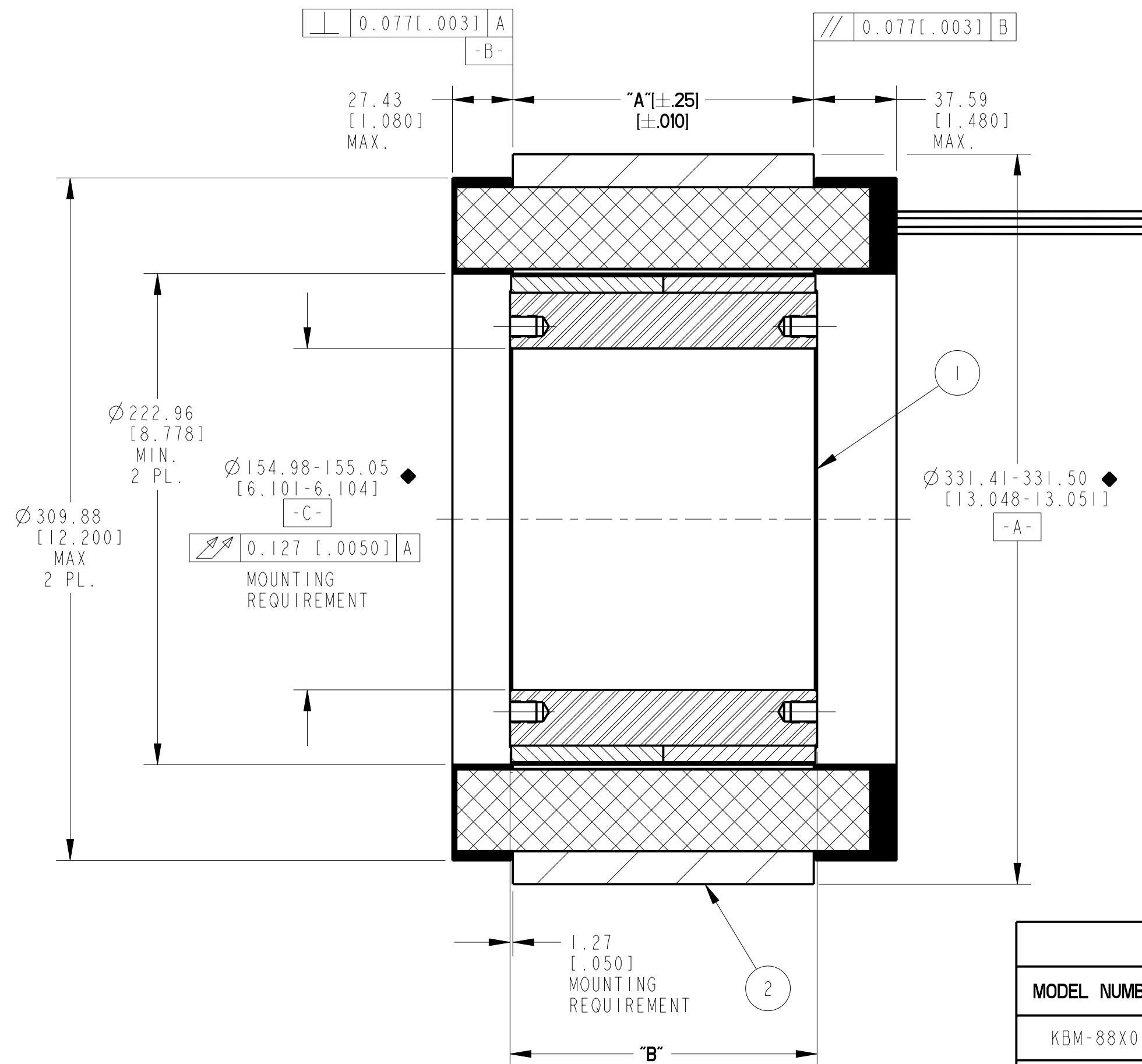
NOTES:

- FOR A CCW ROTATION, AS VIEWED FROM LEAD END, ENERGIZE PER EXCITATION SEQUENCE BELOW.
- MOTOR SUPPLIED AS TWO SEPARATE COMPONENTS, ARMATURE ASSEMBLY AND FIELD ASSEMBLY.
- MINIMUM MOUNTING SURFACE FROM 318.77 [12.55] TO 331.47 [13.050] BOTH SIDES.
- DIMENSIONS IN BRACKETS [] ARE ENGLISH UNITS FOR REFERENCE ONLY.
- NO ANGULAR RELATIONSHIP BETWEEN MOUNTING HOLES ON EITHER SIDE OF ROTOR.
- RoHS (DIRECTIVE 2002/95/EC AND AMMENDMENTS) COMPLIANCE REQUIRED.

MOTOR LEADS :
 #12 AWG, TEFLON INSULATED, U.L. 1199
 3 LEADS, 400 MM [15.75"] MIN
 1- BLUE 1- BROWN 1- VIOLET

THERMISTOR LEADS :
 #26 AWG, TEFLON INSULATED
 2 LEADS, 400 MM [15.75"] MIN
 1- BLUE 1- RED

REVISION				
REV	ECN NO.	DESCRIPTION	DATE	APPROVED



MODEL NUMBER	ARMATURE ASSY H.V. INSULATION	ARMATURE ASSY STD. INSULATION	FIELD ASSY	DIM "A"	DIM "B"
KBM-88X01	946201/01X	946202/01X	946203/01	67.56 [2.660]	70.36 [2.770]
KBM-88X02	946201/02X	946202/02X	946203/02	136.65 [5.380]	139.44 [5.490]
KBM-88X03	946201/03X	946202/03X	946203/03	205.74 [8.100]	208.53 [8.210]

STEP	PHASE "U" BLUE	PHASE "V" BROWN	PHASE "W" VIOLET
1	+	-	
2	+		-
3		+	-
4	-	+	
5	-		+
6		-	+

EXCITATION SEQUENCE TABLE

THIS DOCUMENT IS ONLY FOR USE BY THE INTENDED RECIPIENT AND CONTAINS KOLLMORGEN CONFIDENTIAL INFORMATION

Pro/E Instance Name	KBM88.OUTLINE.946200
Pro/E Drawing Name	946200
Pro/E Model Type	ASSEM
Pro/Engineer Drawing	

ITEM	QTY	IDENTIFYING NO.	DESCRIPTION
3	AR	IM-2709	MARKING PROCEDURE
2	I	SEE TABLE	ARMATURE ASSY
1	I	SEE TABLE	FIELD ASSEMBLY

LIST OF PARTS			
KOLLMORGEN		INLAND MOTOR	
Inland Motor		501 FIRST STREET RADFORD, VIRGINIA 24141	
OUTLINE KBM-88XXX-X00			
DO NOT SCALE DRAWING. USE DIMENSIONS ONLY. ALL DIMENSIONS ARE IN MILLIMETERS. DIMENSIONS IN BRACKETS [] ARE IN INCHES AND ARE FOR REFERENCE ONLY.	DRAWN BY: L&T	DATE: 03-Jun-09	FSCM
INTERPRET GEOMETRIC SYMBOLS PER ANSI Y14.5M-1982	CHECKED BY: LW	DATE: 18-Sep-09	11384
	APPROVED BY: AG	DATE: 18-Sep-09	SIZE C
			DWG. NO. 946200
			REV -
			SCALE: .500
			JOB NO.:
			SHEET 1 OF 1

METRIC DRAWING	
SIGNIFICANT PRODUCT CHARACTERISTIC	
CRITICAL PRODUCT CHARACTERISTIC	

DWG. NO. 946200