

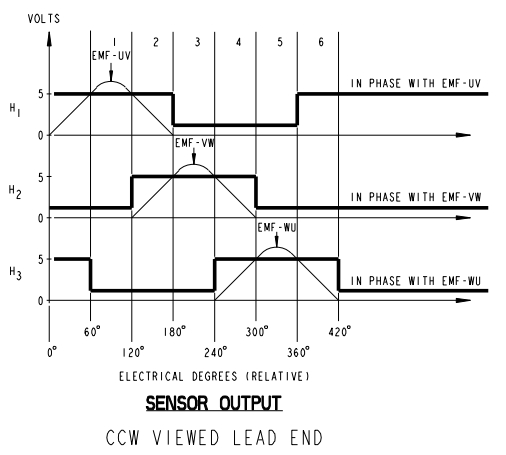
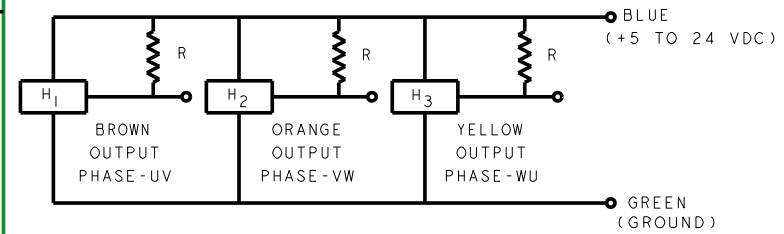
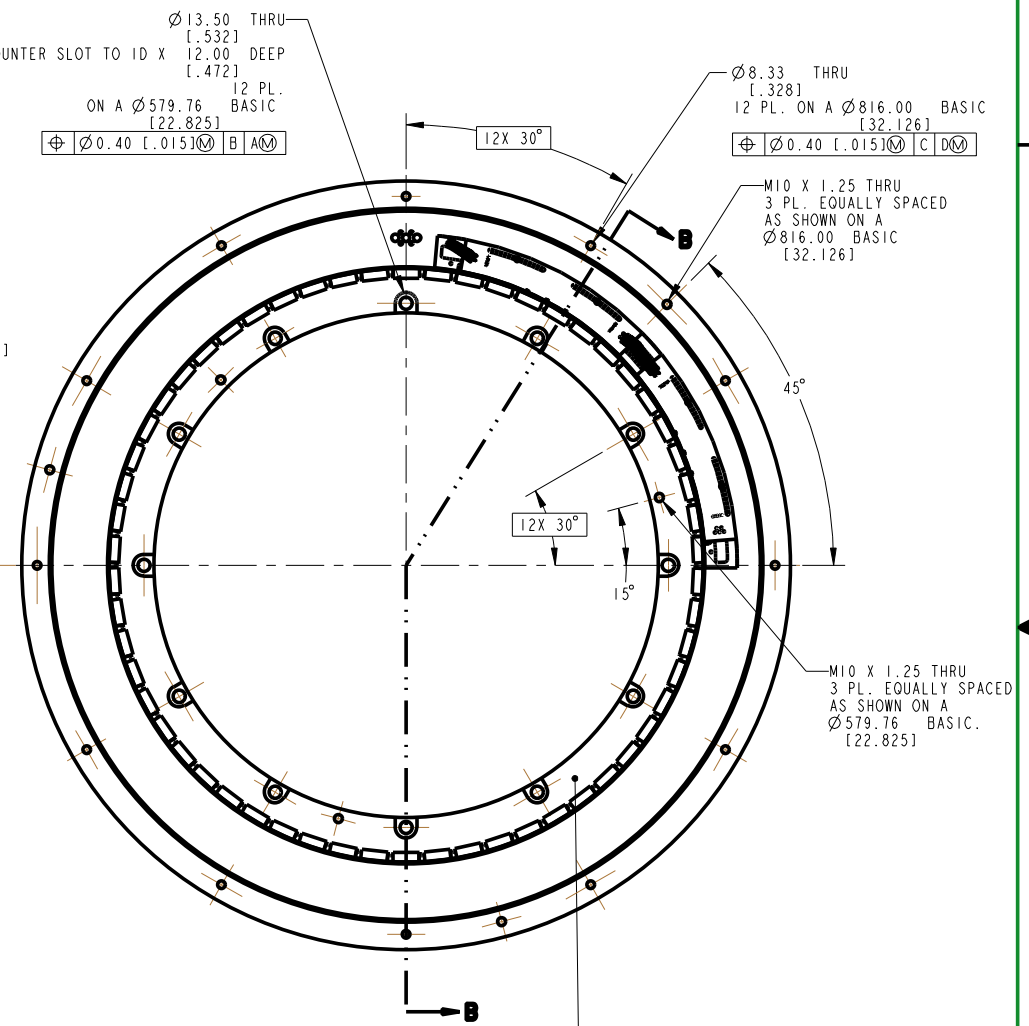
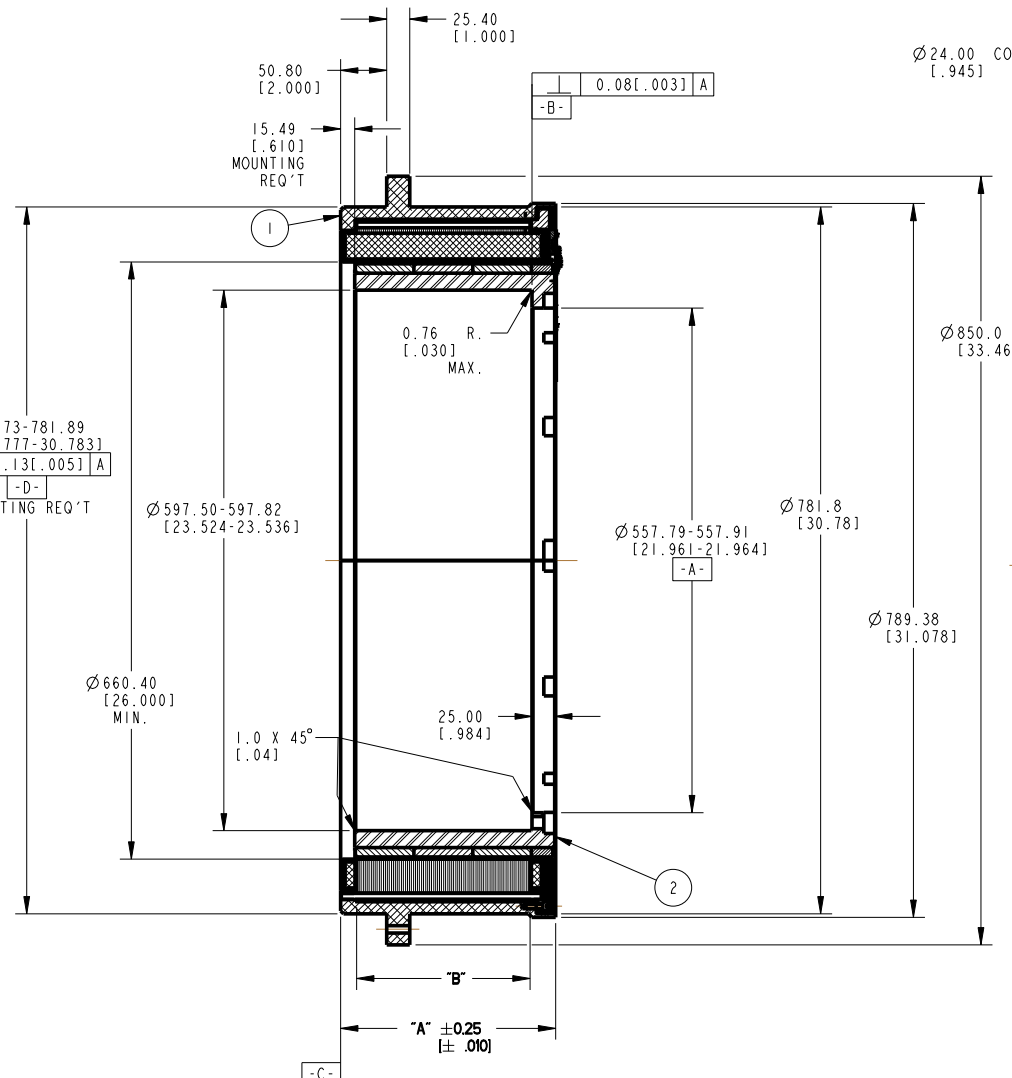
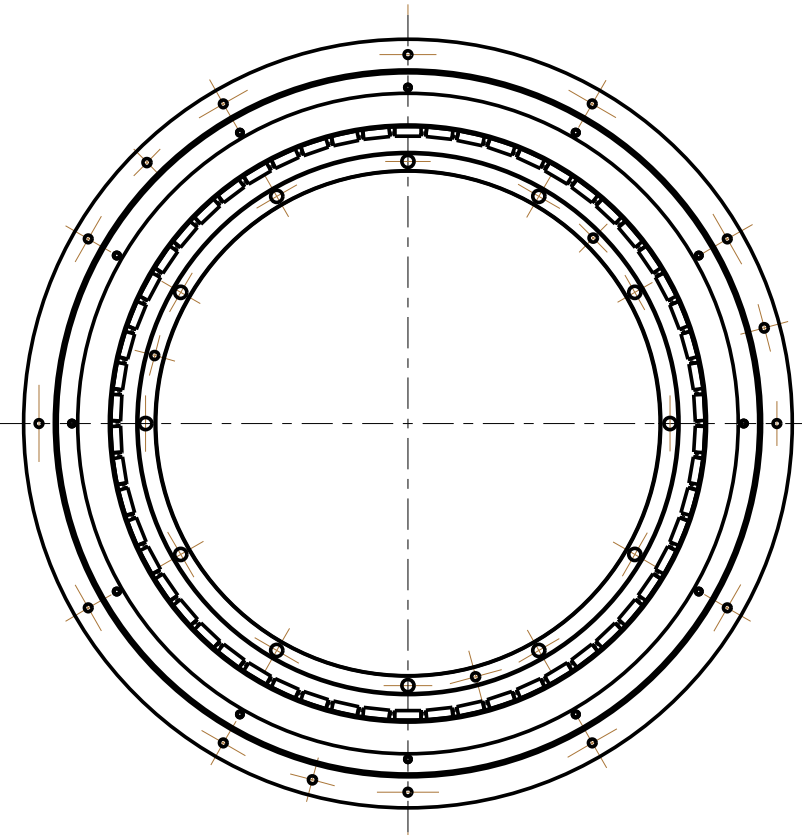
REVISION				
REV	ECN NO.	DESCRIPTION	DATE	APPROVED
A	R01-13452	SEE ECO	3-04-2010	T&B

- NOTES:
- FOR A C.C.W. ROTATION, AS VIEWED FROM LEAD END, ENERGIZE PER EXCITATION SEQUENCE BELOW.
 - MOTOR SUPPLIED AS TWO SEPARATE COMPONENTS, ARMATURE ASSEMBLY, AND FIELD ASSEMBLY.
 - DIMENSIONS IN BRACKETS [] ARE ENGLISH UNITS FOR REFERENCE ONLY.
 - HIGH STRENGTH ALLOY STEEL BOLTS MUST BE USED FOR MOUNTING. (METRIC CLASS 12.9, ASTM GRADE A574)
 - R=1.5KOHMS APPROX (CUSTOMER SUPPLIED)
 - EMF-UV, EMF-VW AND EMF-WU IS BACK EMF OF MOTOR PHASES UV, VW AND WU RESPECTIVELY, ALIGNED WITH SENSOR OUTPUT AS SHOWN FOR C.C.W. ROTATION.
 - RoHS (DIRECTIVE 2002/95/EC AND AMENDMENTS) COMPLIANCE REQUIRED.

MOTOR LEADS:
 #10 AWG, TEFLON INSULATED, U.L.1199
 3 LEADS, 900 mm [35"] MIN
 1- BLUE 1- BROWN 1- VIOLET

THERMISTOR LEADS:
 #26 AWG, TEFLON INSULATED
 4 LEADS, 900 mm [35"] MIN
 2- BLUE 2- RED

SENSOR LEADS:
 #26 AWG TEFLON COATED PER MIL-W-22759/11
 5 LEADS, 900 MM [35"] MIN
 1-BLUE 1-GREEN 1-BROWN 1-ORANGE 1-YELLOW



MODEL NUMBER	ARMATURE & HOUSING ASSEMBLY	FIELD ASSEMBLY	DIM "A"	DIM "B"
KBM(S)-260X01	947988/01X	947989/01	172.62 [6.796]	156.21 [6.150]
KBM(S)-260X02	947988/02X	947989/02	237.39 [9.346]	220.98 [8.700]
KBM(S)-260X03	947988/03X	947989/03	302.16 [11.896]	285.75 [11.250]

THIS DOCUMENT IS ONLY FOR USE BY THE INTENDED RECIPIENT AND CONTAINS KOLLMOGEN CONFIDENTIAL INFORMATION

STEP	PHASE "U" BLUE	PHASE "V" BROWN	PHASE "W" VIOLET
1	(+)	(-)	(-)
2	(+)	(-)	(-)
3	(-)	(+)	(-)
4	(-)	(+)	(-)
5	(-)	(+)	(-)
6	(-)	(+)	(-)

EXCITATION SEQUENCE TABLE

3	AR	1M-2709	MARKING PROCEDURE
2	I	SEE TABLE	FIELD ASSEMBLY
1	I	SEE TABLE	ARMATURE HOUSING AND SENSOR ASSEMBLY
ITEM	QTY	IDENTIFYING NO.	DESCRIPTION
LIST OF PARTS			
UNLESS OTHERWISE SPECIFIED: REMOVE ALL SHARP BURRS AND BREAK ALL SHARP EDGES X DECIMAL PLACES ±.4 [0.015] XX DECIMAL PLACES ±.13 [0.005] ANGULAR DIMENSIONS ±1°			INLAND MOTOR 501 FIRST STREET RADFORD, VIRGINIA 24141
OUTLINE AND ASSEMBLY KBMS-260XXX-X00			FSCM
SCALE: 0.250			REV A