

CM-2-500

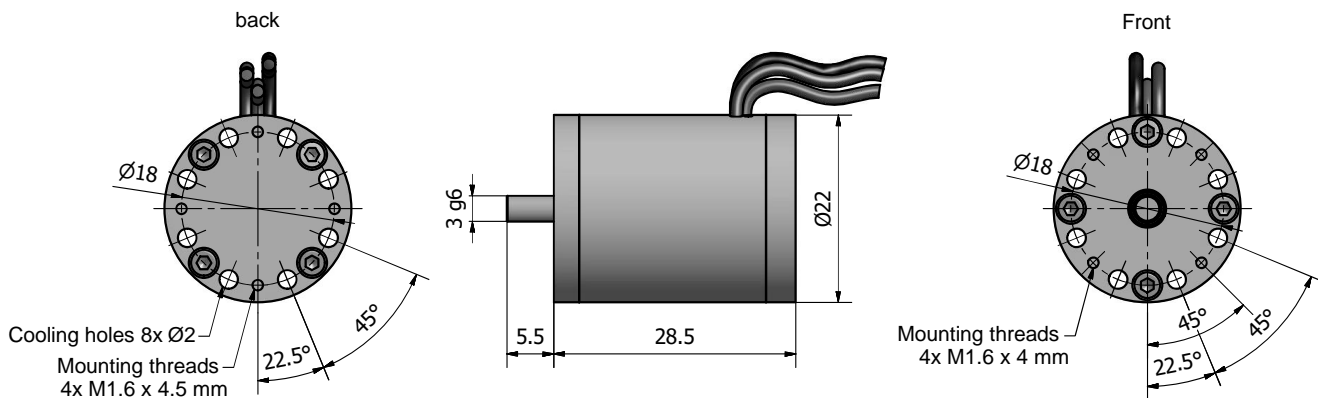
Permanent-magnet machine for direct drive of applications with highest speed demands.

- Special mechanical rotor construction for highest stresses
- Stator winding and core configuration for optimal efficiency despite highest rotational speeds
- Low heat generation in stator and rotor
- High-speed ball bearings with permanent lubrication
- Ideal in combination with converter CC-75-500
- Customized adaptations available

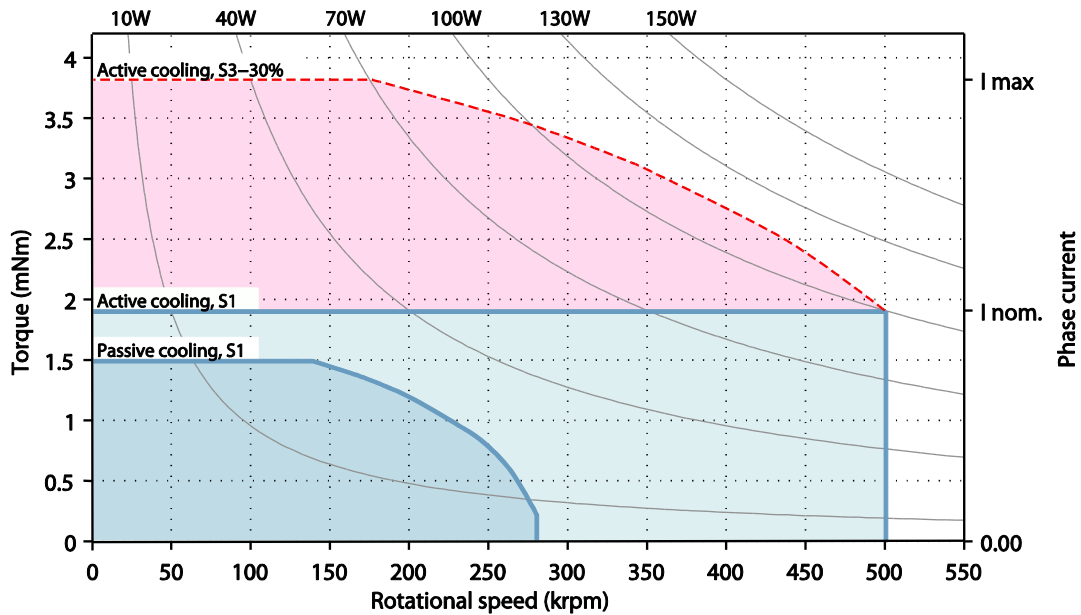


Specifications motor	
Pole-pair number	1
Rated speed	500,000 rpm
Rated power	100 W
Rated torque	2 mNm
Weight	36 g
Temperature measurement	Thermocouple Type K
Axial moment of inertia (rotor)	$1.95 \cdot 10^{-8} \text{ kg m}^2$

Drawing (in mm)



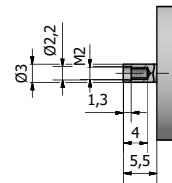
Operating range



Order codes: CM-2-500.Rxxx.Bxx.Fxx.Cxx

Rotor typ Rxx

RM00 (standard)	Without boring/thread
RM02	With M2 thread (right hand)
RD02	With 2 mm boring
RM10	Extended shaft stub (10.7 mm)
RC99	Custom specific boring/thread



Bearing type Bxx

B00 (standard)	Standard ball bearing
B01	Vacuum ball bearing
B99	Custom specific ball bearing

Front flange Fxx

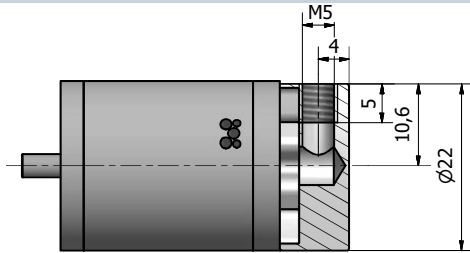
F00 (standard)	Standard flange, rotor dismountable only without front load attached
F01	Half-shell flanges, rotor dismountable with front load attached
F99	Custom specific front flange

Cooling flange Cxx (air cooling)

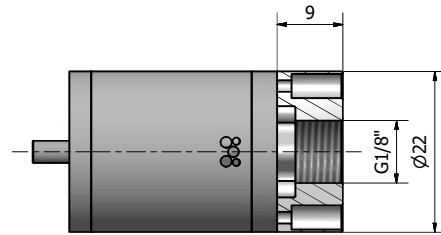
C00 (standard)	No cooling flange
C01	Cooling flange with radial inlet
C02	Cooling flange with axial inlet
C99	Custom specific cooling flange

Cooling flange

Cooling flange C01



Cooling flange C02



Optional services for customized adaptations

- Thermal design
- Rotor dynamic design