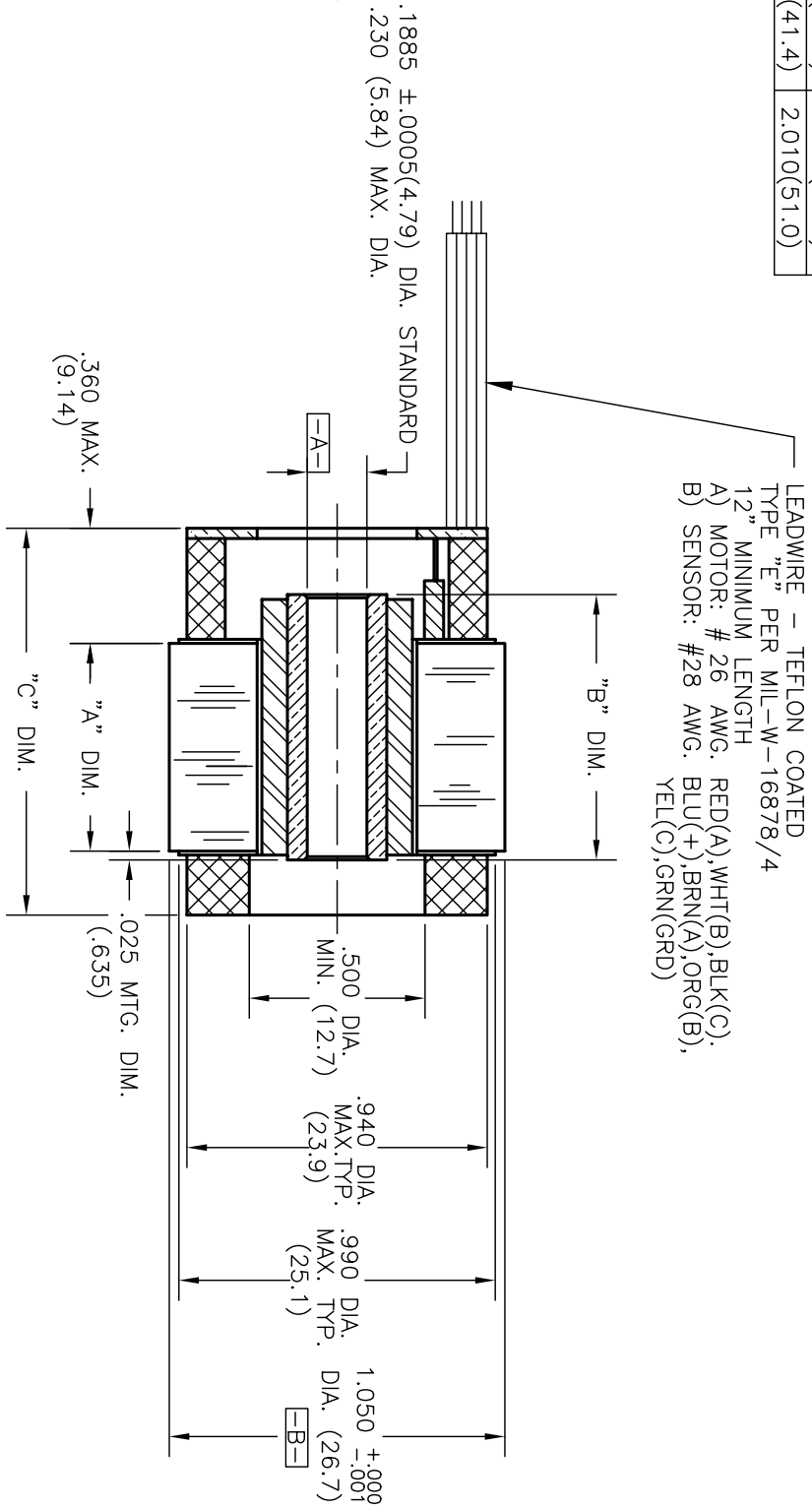
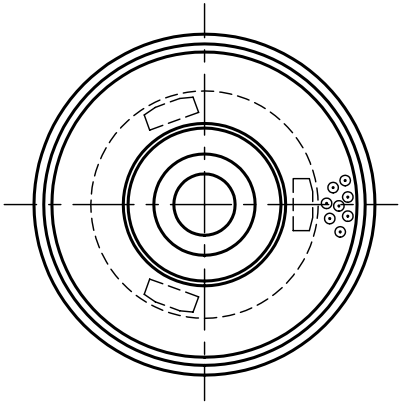


REVISION			
ECN	LTR	DATE	APPROVED
-	A	8/31/94	GLG
REVISE AND REDRAW			

MODEL	"A" DIM.	"B" DIM.	"C" DIM.
HT01000	.250(6.4)	.430(10.9)	.810(20.6)
HT01001	.650(16.6)	.830(21.1)	1.210(30.7)
HT01002	1.050(26.7)	1.230(31.3)	1.610(40.9)
HT01003	1.450(36.8)	1.630(41.4)	2.010(51.0)



LEADWIRE - TEFLON COATED
 TYPE "E" PER MIL-W-16878/4
 12" MINIMUM LENGTH
 A) MOTOR: # 26 AWG. RED(A),WHT(B),BLK(C).
 B) SENSOR: #28 AWG. BLU(+),BRN(A),ORG(B),
 YEL(C),GRN(GRD)

- NOTES:
1. MOTOR SUPPLIED AS TWO SEPARATE COMPONENTS, ROTOR ASSEMBLY AND STATOR ASSEMBLY.
 2. DIAMETERS "A" AND "B" TO BE CONCENTRIC WITHIN .002 WHEN MOUNTED.
 3. MOUNTING SURFACE BETWEEN 1.050 AND .990 DIAMETERS ON BOTH SIDES.

UNLESS OTHERWISE SPECIFIED DIMENSIONS ARE IN INCHES TOLERANCES ON		DRAWSMAN: GLG	DATE: 4/2/92
ANGLES 3 PLACE	2 PLACE	CHECKER:	
F07 30	DEC ± .005	ENGINEER:	
DO NOT SCALE			
MATERIAL			
FINISH		CUSTOMER:	
DWG NUMBER B		CODE IDENTIFICATION	DRAWING NUMBER
SIZE 00214		00214	HT01000F
SCALE			SHEET
			OF
Emotek Corp 10002-B East 43rd St. South TULSA, OK 74148 TITLE: OUTLINE FRAMELESS MOTOR			