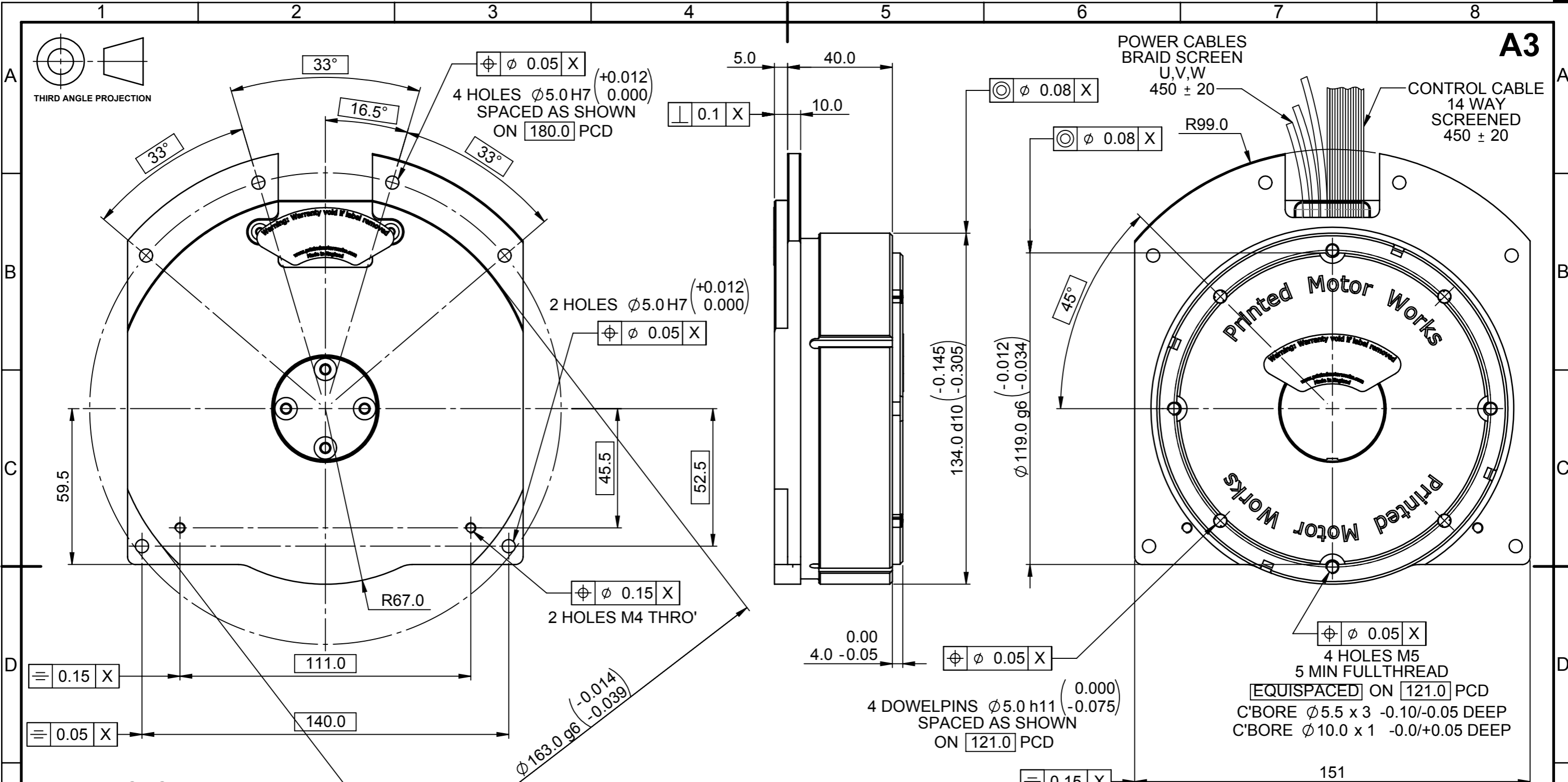


© PRINTED MOTOR WORKS LIMITED
 THIS DRAWING, ENGINEERING REPORT OR DOCUMENT IS COPYRIGHT AND PROPERTY IS RESERVED THEREIN AND THE INFORMATION CONTAINED THEREIN IS CONFIDENTIAL. THIS DRAWING, ENGINEERING REPORT OR DOCUMENT AND INFORMATION MAY NOT BE REPRODUCED OR COMMUNICATED TO A THIRD PARTY OR USED FOR ANY PURPOSE OTHER THAN THAT FOR WHICH IS SUPPLIED WITHOUT THE PRIOR WRITTEN CONSENT OF THE COMPANY.



DUTY CYCLE MOTOR RATINGS.

VOLTAGE.....48 VDC
 CURRENT.....10.25 Amps
 TORQUE.....8.0 Nm
 SPEED.....480 r.p.m
 POWER.....402 Watts

MOTOR CONSTANTS.

VOLTAGE.....Ke 61 V/1000 r.p.m
 TORQUE.....Kt 58 Ncm/ Amp
 DAMPING.....Kd Ncm / 1000 r.p.m
 FRICTION.....Tf Ncm
 TERMINAL RESISTANCE 0.51 Ohm L - L
 TERMINAL INDUCTANCE 2.94 mH L - L

ENCODER.

CPR 2072
 CHANNEL A & B
 INDEX

NOTES:

- ELECTRICAL TEST SPEC. No. 213
- THERMISTER NTC 10K ± 5% ND03N00103JCC

GENERAL ASSEMBLY DRG.
 5310765

UNLESS SPECIFIED SHAFT CENTRES SHALL CONFORM TO BS.EN.ISO 6411-1997 TYPE A. CENTRE DRILL TO CONFORM TO ISO.866 ALL METRIC THREADS TO BE COARSE CLASS 6H OR 6g					PART MARKING INDELIBLY MARK ON PART No. WHERE MARKED		TOLERANCES UNLESS STATED 0. ± 0.4 0.0 ± 0.1 0.00 ± 0.05 ANGULAR ± 0.5° SURFACE FINISH 1.6		DIMENSIONS mm ESTIMATED MASS 3269.80 SCALE 1:1.5		UNLESS SPECIFIED ALL CHAMFERS & RADII 0.5 MAX. REMOVE BURRS & SHARP EDGES. DIMENSIONS APPLY AFTER PLATING MATERIAL SEE NOTE FINISH SEE NOTE		PRINTED MOTOR WORKS Ltd, ALTON, HAMPSHIRE. GU34 2QW. UK TITLE CUSTOMER OUTLINE DRG. XR15-05E DO NOT SCALE. IF IN DOUBT ASK. BS 8888		DRAWING NUMBER 009208		SHEET 1 OF 2	
ISS.	DATE	CR No.	ZONE	INITIALS	DRAWN BY	DATE	CHECKED BY	DATE	APPROVED BY	DATE								
02	06/10/2014	CR4516		GB	G. BELL	19/08/2014	RB	19/08/2014										
01	30/06/2014			GB														

